

95 Express Monthly Operations Report – July 2014

General

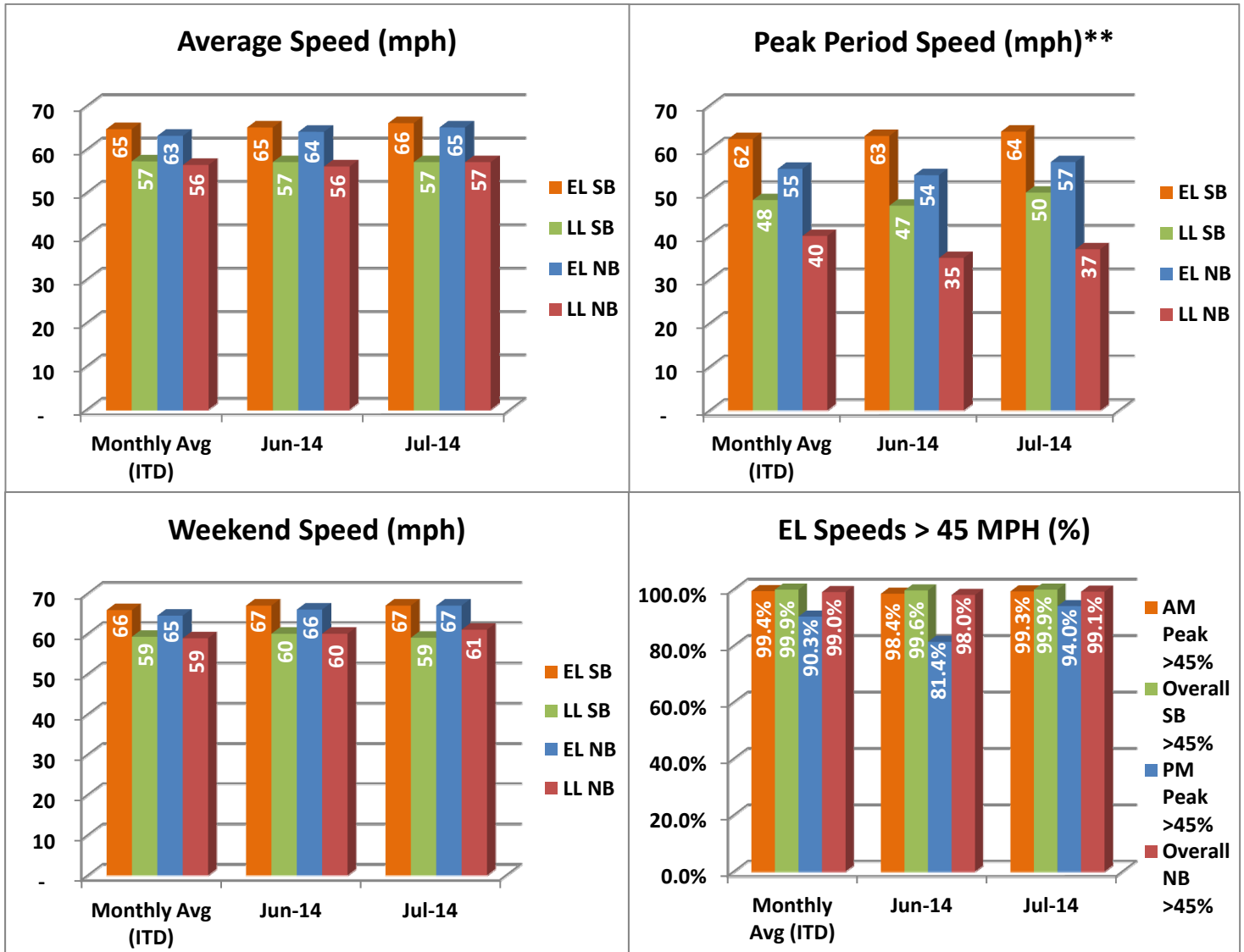
In total, the 95 Express Lanes:

- ✓ Serviced 1,645,602 vehicle trips in July 2014 (12.63M trips in 2014 to date), bringing the total since opening (July 5, 2008) to approximately 100.9 million trips.
- ✓ Had estimated monthly toll revenue of \$1.69 million in July 2014 (\$13.3M in 2014 to date), bringing the total revenue to date to approximately \$84.4 million.
- ✓ Increased to a total of 9,126 registered vehicles, resulting in 56,069 toll exempt trips.

<u>July 2014 Statistics</u>	<u>Southbound</u>		<u>Northbound</u>			
Total Trips	820,251		825,351			
Exempt Trips	28,923		27,146			
Revenue						
	\$838,387		\$853,748			
Tolls						
- Range***	\$0.00 - \$10.50		\$0.00 - \$10.50			
- Avg. Weekday	\$1.28		\$1.30			
- Avg. Peak Period**	\$2.04		\$2.59			
- Avg. Weekend	\$0.49		\$0.47			
- Avg. Off Peak	\$1.02		\$0.87			
- 85 th Percentile Weekday	\$2.75		\$2.50			
Volume (veh)						
	EL	LL	EL	LL		
- Avg. Weekday	29,797	104,105	29,595	100,300		
- Avg. Peak Period**	8,598	18,778	7,962	18,106		
Speed (mph)						
	EL	LL	Δ	EL	LL	Δ
- Avg. Overall	66	57	9	65	57	8
- Avg. Peak Period**	64	50	14	57	37	20
Operated Above 45 MPH						
	99.9%		99.1%			
Remained Open to Motorists						
	76.2%		94.4%			
Closed due to Planned Construction						
	19.5%		2.7%			
Closed due to Non-recurring Events						
	3.4%		3.0%			
EL (Express Lanes); LL (Local Lanes)						
**Peak Period is defined as 6-9 AM (southbound) and 4-7 PM (northbound).						
***Maximum Toll Increase started in March 2014; from \$1.00 per mile, maximum, to \$1.50 per mile.						

Operations/Traffic Statistics - Speed Data

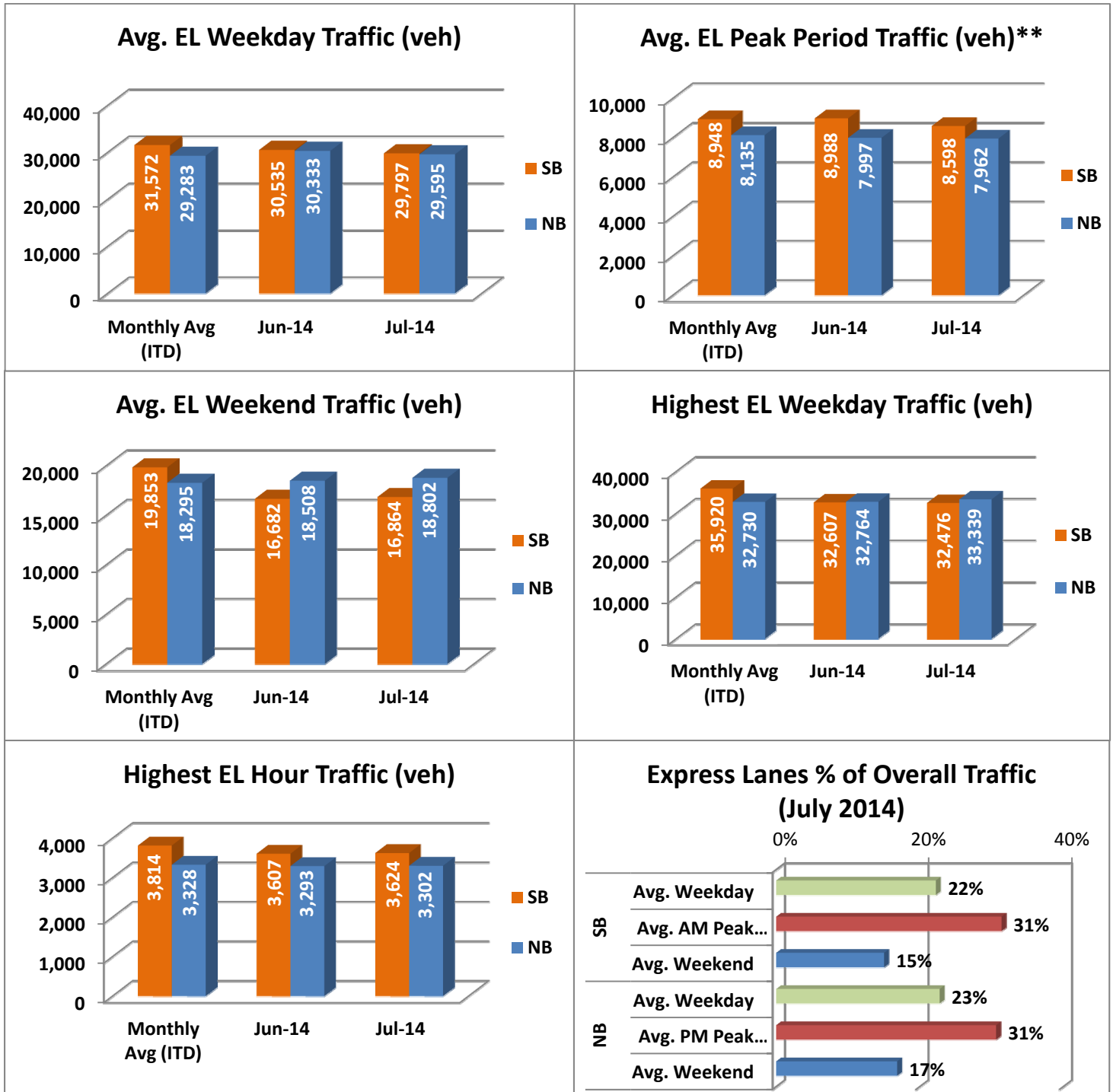
** Peak Period is defined as 6-9 AM (southbound) and 4-7 PM (northbound).



NOTE: ITD = Inception to Date

Operations/Traffic Statistics - Volume Data

** Peak Period is defined as 6-9 AM (southbound) and 4-7 PM (northbound).

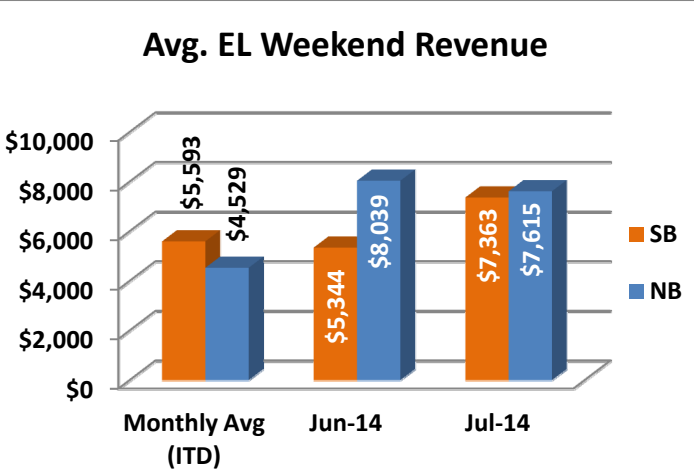
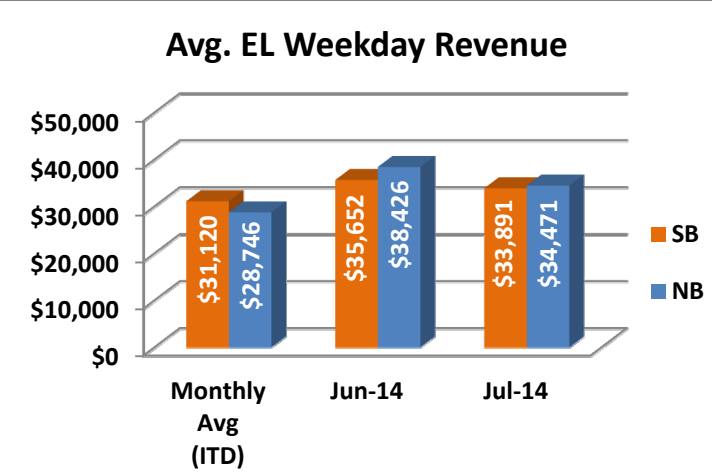
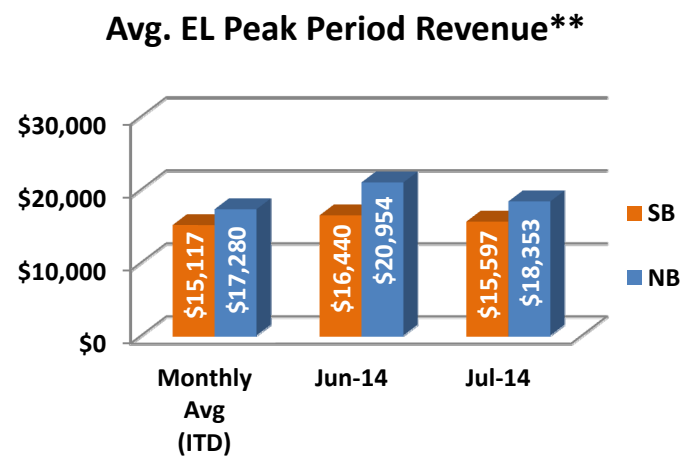
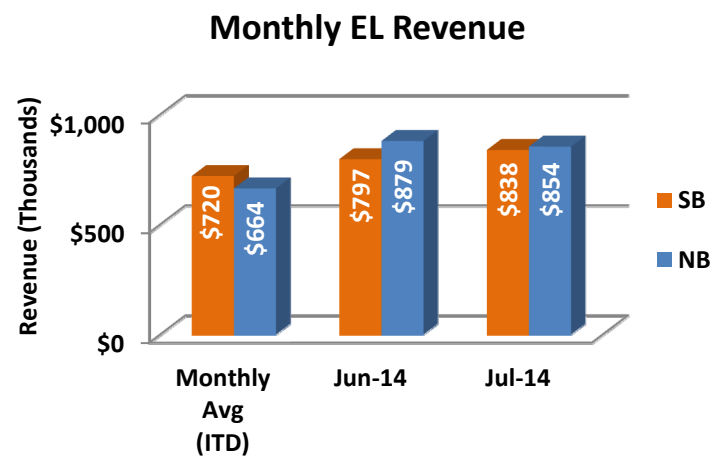
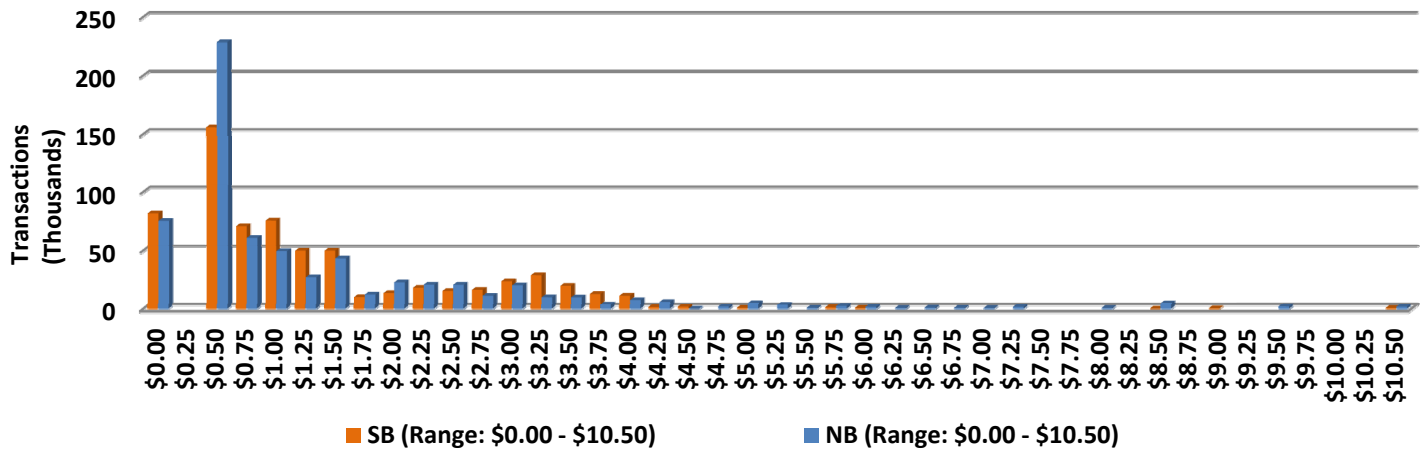


NOTE: ITD = Inception to Date

Revenue/Tolls Statistics

** Peak Period is defined as 6-9 AM (southbound) and 4-7 PM (northbound). Maximum toll increase started March 2014; from \$1.00 per mile, maximum, to \$1.50 per mile.

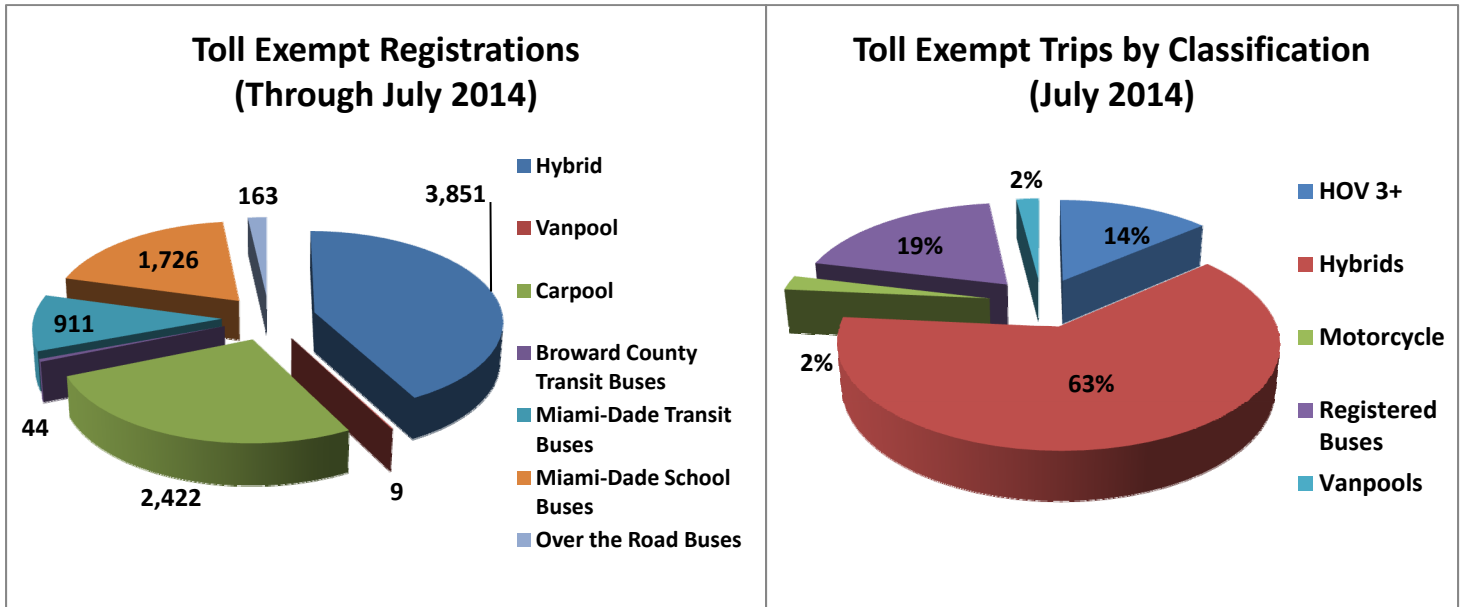
EL Weekday Total Transactions by Toll Amount Charged (July 2014)



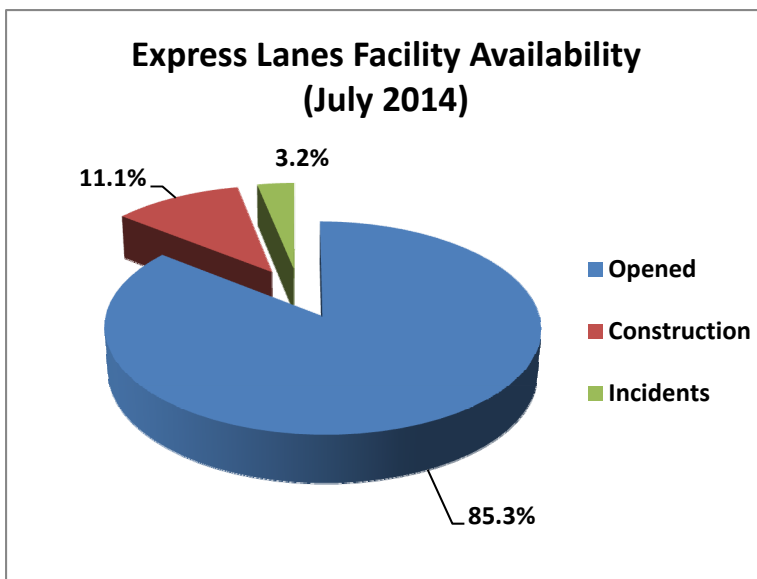
NOTE: ITD = Inception to Date

Registrations—Toll Exempt Trips

The total registrations through July 2014 increased to 9,126. The 56,069 Toll Exempt Trips for this month are shown by classification below.



Facility Availability



The entire 95 Express lanes (both directions) were open to motorists 85.3% of the time, while closed 11.1% due to 28 planned construction/ maintenance events (each lasting approximately 5 hours, 53 minutes in duration, on average) and 3.2% due to 177 non-recurring events (each lasting approximately 16 minutes in duration, on average).